

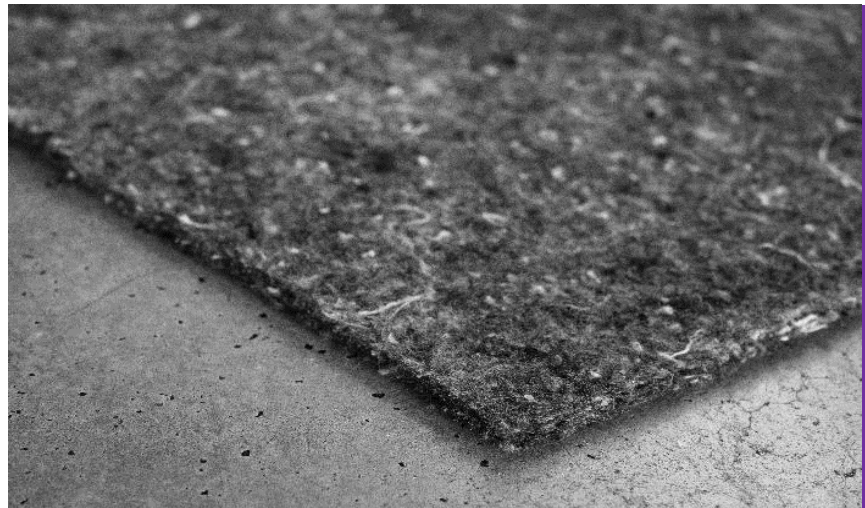


SINCE
1950

TRADITIONAL QUALITY NONWOVENS

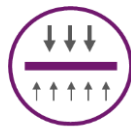
GETEX

Nonwoven needle punched textile



- Characteristic:** Nonwoven textile mechanically bonded by needle punching
- Material content:** 100 % Recycled fibres
- Colour:** Various
- Weight:** 200 to 700 g/m²
- Standard width:** 1, 2 or 4 m
- Certification:** Management system according to standards ISO 9001, ISO 14001, ISO 45001 and ISO 50001

Funktion:



TEMPORARY
SEPARATION

Use: In construction industry for special applications



CONSTRUCTION
INDUSTRY

Material specification sheet

Date: 01.11.2021

No: T-005-03



SINCE
1950

TRADITIONAL QUALITY NONWOVENS

Material specification sheet

Date: 01.11.2021

No: T-005-03

GETEX

Nonwoven needle punched textile

GETEX	200	250	300	350	400	500	700	
PHYSICAL PROPERTIES								
Weight [±15 %] / EN 29073-1	g/m ²	200	250	300	350	400	500	700
Thickness / ČSN EN ISO 9863-1	mm	3,3	3,6	3,8	4,1	4,3	4,5	5
FUNCTION								
Temporary separation	TS	X	X	X	X	X	X	X
CHARACTERISTICS								
Description	Nonwoven textile mechanically bonded by needle punching							
Material content	Recycled fibres							
Colour	Various							
DIMENSION, PACKAGING AND STORAGE								
Roll width	m	1, 2 or 4						
Roll length	m	50	50	50	50	50	25	25
Packaging	Rolls are packed in PE foil.							
Storage	In covered, clean and dry spaces							

The above technical parameters are average values and serve for general information. The manufacturer reserves the right to change it.