



SINCE
1950

ENVIZOL TRAIN FR AL

Thermally and acoustically absorbing board



- Characteristics:** Nonwoven thermobonded textile laminated with AL foil for thermal insulation and acoustic applications
- Material content:** 10 % PES Bico
90 % Recycled polymer fibers
AL / Aluminium foil 30 µm
- Colour:** Grey
- Certification:** Quality Management System ISO 9001, ISO 14001, ISO 45001 and ISO 50001
- Fire classification:** ČSN EN 45545-2+A1 (HL1, HL2 a HL3)
- Function:**



THERMAL
INSULATION



ACOUSTIC
ABSORPTION

Use:



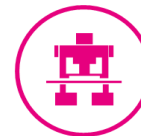
ROLLING STOCK



BUS



TRAM



INDUSTRIAL
EQUIPMENTS

Material Specification

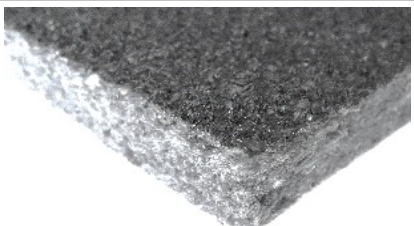
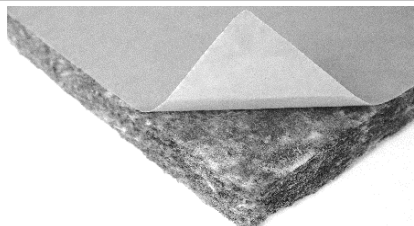
Date of Issue: 1. 5. 2020

No.: I-007-3

ENVIZOL TRAIN FR AL

Thermally and acoustically absorbing board

Technical parameters

	ENVIZOL TRAIN	TL20	TL25	TL30	TL35	TL40	TL50	TL60	Tolerance	
PHYSICAL PROPERTIES										
Mass per unit area / EN ISO 9864	g/m ²	700	875	1050	1225	1400	1750	2100		
Mass of fully saturated board	kg/m ³	35	35	35	35	35	35	35		
Thickness 0,5 kPa / EN ISO 9073-2	mm	20	25	30	35	40	50	60	± 15 %	
SOUND INSULATION PROPERTIES										
Sound absorption / ČSN ISO 10534-1	Attachment No. 1									
THERMAL INSULATION PROPERTIES										
Thermal conductivity - laboratory humidity / ČSN EN 12667	W/m.K	0,035	0,035	0,035	0,035	0,035	0,035	0,035	± 20 %	
FIRE CLASSIFICATION										
ČSN EN 45545-2+A1	R1, R7 and R17	HL3	HL3	HL3	HL3	HL3	HL3	HL3		
Critical heat flux at extinguishment ≥ 20 kW/m ² / ISO 5658-2 / ECE Regulation No. 118	M2 a M3 6.2.2, 6.2.3, 6.2.4	X	X	X	X	X	X	X		
OPTIONAL SURFACE FINISHING										
Type:										
			DR - Drainage mat 10 mm a 400 g/m ²				SA - self-adhesive acrylic layer 100 g/m ²			
Finishing SA 90° peel strength / EN 1939/PSTC101 After 24 H	Steel	N/25 mm	28	28	28	28	28	28		
	ABS		27	27	27	27	27	27		
	PP		5	5	5	5	5	5		
DIMENSIONS										
Delivered format	board									
Width	cm	250						± 2 cm		
Length	cm	100						± 2 cm		
PACKAGING AND STORAGE										
Storage	In covered, clean and dry spaces									

The data was measured at the laboratories of RETEX a.s. / CZ, VUT Brno / CZ, Building Testing and Research Institute Bratislava / SK and CZ testing institute s.r.o. / CZ.

All dates are for informative purpose only - this Specification does not substitute Declaration of conformity