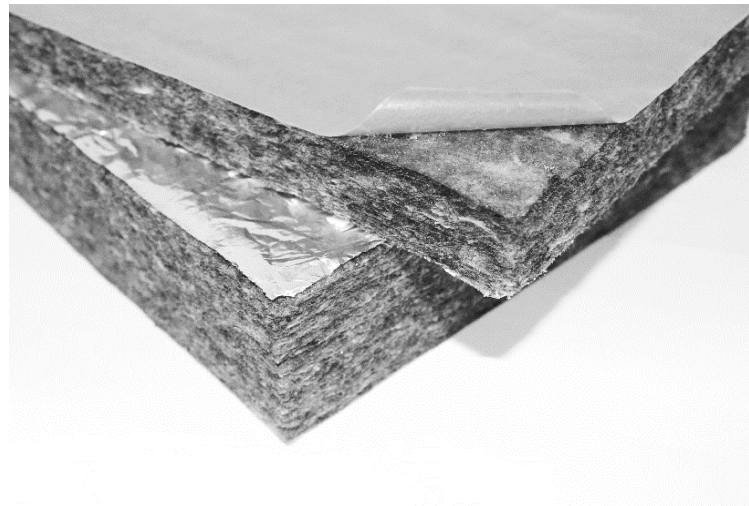




SINCE
1950

ENVIZOL TRAIN AL SA

Thermally and acoustically absorbing
board with selfadhesive layer



- Characteristics:** Nonwoven thermobonded textile laminated with AL foil for thermal insulation and acoustic applications
- Material content:** 10 % PES Bico
90 % Recycled polymer fibers
AL / Aluminium foil 30 µm
SA / Selfadhesive layer
- Colour:** Grey
- Certification:** Quality Management System ISO 9001, ISO 14001, ISO 45001 and ISO 50001
- Fire classification:** ČSN EN 45545-2+A1 (HL1, HL2 a HL3)
- Function:**



THERMAL
INSULATION



ACOUSTIC
ABSORPTION

Use:



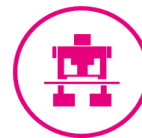
ROLLING STOCK



BUS



TRAM



INDUSTRIAL
EQUIPMENTS

Material specification sheet

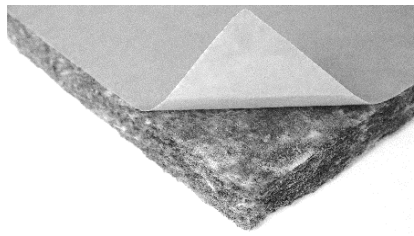
Date: 28. 4. 2021

No.: I-010-1

ENVIZOL TRAIN AL SA

Thermally and acoustically absorbing board
with selfadhesive layer

Technical parameters

ENVIZOL TRAIN AL SA		TL5	TL14	TL25	Tolerance	
PHYSICAL PROPERTIES						
Mass per unit area / EN ISO 9864	g/m ²	600	700	750	± 15 %	
Bulk density	kg/m ³	25	25	25	± 15 %	
Tloušťka 0,5 kPa / EN ISO 9073-2	mm	5	14	25	± 15 %	
SOUND INSULATION PROPERTIES						
Sound absorption / ČSN ISO 10534-1	On request					
FIRE CLASSIFICATION						
ČSN EN 45545-2+A1	R1, R7 a R17	HL3	HL3	HL3		
OPTIONAL SURFACE FINISHING						
Type: SA - selfadhesive layer	 <p>SA - Selfadhesive layer 100 g/m²</p>					
Weight	g/m ²	100				
Finishing SA 90° peel strength / EN 1939/PSTC101 After 24 H	Ocel	28				
	ABS	N/25 mm	27			
	PP		5			
DIMENSIONS						
Delivered format	board					
Width	cm	240			± 2 cm	
Length	cm	100			± 2 cm	
PACKAGING AND STORAGE						
Storage	In covered, clean and dry spaces					

The data was measured at the laboratories of RETEX a.s. / CZ, VUT Brno / CZ, Building Testing and Research Institute Bratislava / SK and CZ testing institute s.r.o. / CZ.

All dates are for informative purpose only - this Specification does not substitute Declaration of conformity