

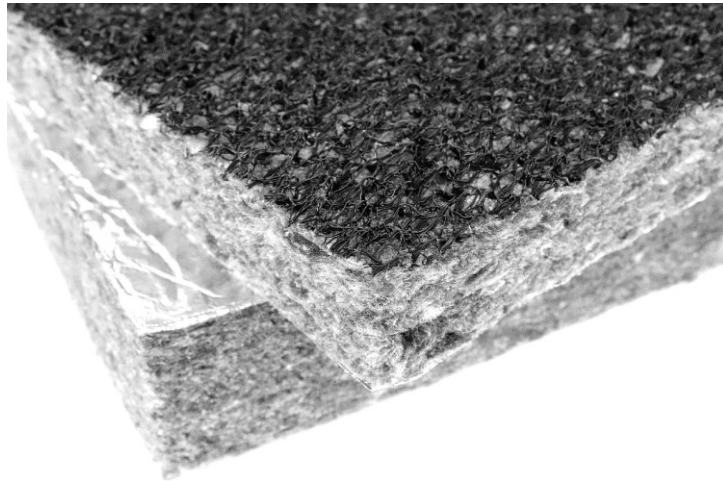


SINCE
1950

TRADITIONAL QUALITY NONWOVENS

ENVIZOL TRAIN AL DR

Thermally and acoustically absorbing board with drainage layer



- Characteristics:** Nonwoven thermobonded textile laminated with AL foil for thermal insulation and acoustic applications
- Material content:**
 - 10 % PES Bico
 - 90 % Recycled polymer fibers
 - AL / Aluminium foil 30 µm
 - DR / Drainage mat 7,5mm 350gsm
- Colour:** Grey
- Certification:** Quality Management System ISO 9001, ISO 14001, ISO 45001 and ISO 50001
- Fire classification:** ČSN EN 45545-2+A1 (HL1, HL2 a HL3)
- Function:**



THERMAL INSULATION



ACOUSTIC ABSORPTION

Use:



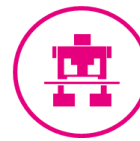
ROLLING STOCK



BUS



TRAM

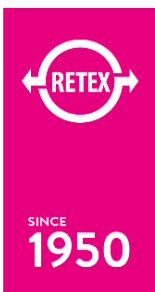


INDUSTRIAL EQUIPMENTS

Material specification sheet

Date: 21. 2. 2021

No: I-008-2



TRADITIONAL QUALITY NONWOVENS

Material specification sheet

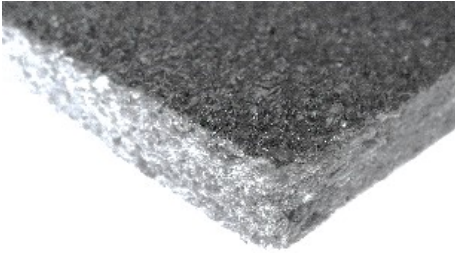
Date: 21. 2. 2021

No: I-008-2

ENVIZOL TRAIN AL DR

Thermally and acoustically absorbing board
with drainage layer

Technical parameters

		ENVIZOL TRAIN AL DR	TL30	TL40	TL50	TL60	TL10	TL30	TL40	TL50	Tolerance
PHYSICAL PROPERTIES											
Mass per unit area / EN ISO 9864		g/m ²	600	800	1 000	1200	600	750	1000	1250	± 15 %
Bulk density		kg/m ³	20	20	20	20	25	25	25	25	± 15 %
Thickness 0,5 kPa / EN ISO 9073-2		mm	30	40	50	60	10	30	40	50	± 15 %
SOUND INSULATION PROPERTIES											
Sound absorption / ČSN ISO 10534-1	Attachment No. 1										
FIRE CLASSIFICATION											
ČSN EN 45545-2+A1	R1, R7 a R17		HL3								
OPTIONAL SURFACE FINISHING											
Type:	 <p>DR - Drainage mat / thickness: 7,5 mm and weight: 350 g/m²</p>										
Drainage layer parameters	Thickness	mm	7,5								
	Weight	g/m ²	350								
	Fixation	selfadhesive g/m ²	100								
DIMENSIONS											
Delivered format	board										
Width	cm	240						± 2 cm			
Length	cm	100						± 2 cm			
PACKAGING AND STORAGE											
Storage	In covered, clean and dry spaces										

The data was measured at the laboratories of RETEX a.s. / CZ, VUT Brno / CZ, Building Testing and Research Institute Bratislava / SK and CZ testing institute s.r.o. / CZ.

All dates are for informative purpose only - this Specification does not substitute Declaration of conformity